

TOP SECRET

CONFIDENTIAL

FOR YOUR EYES ONLY

STUDY MATERIALS AND TEST ANSWERS:

MUSICAL TERMS

Instrument Word Find

The names of the instruments, ensembles, and instrument families listed to the right can be found in the letters below. They may appear forward, backward, up, down, or diagonally.

A E I O U B E I H A R P U R N V I W
 N O P D E N O H P O X A S P I A N O
 R B D O U B L E B A S S V I T H R A
 O T A E F I P S D N I W D O O W F J
 H M E N O T I R A B O P I C C O L O
 H S D X D O X W L Y G T M Y N X U K
 S E Q F R E N C H H O R N D I Z T I
 I N S N O A J Y E P N Q H C L N E L
 L O U X E S T R I N G S W K O O Q N
 G B P O R C H E S T R A E V I O L A
 N M C L F K U B O N L Q P B V S V G
 E O M E I N A P M I T K E M R S W E
 T R U M P E T E Z W M L R I S A H Z
 E T W I R Y U O S U L P C Y M B A L
 N X P H T A B R A S S J U B T R N X
 I V X C M D A C J O V W S L H O I O
 R H I Q E W M A R A C A S W Q L A S
 A D P T Z R L I Y P T Z I E A L N V
 L G D R U M S V N M L Q O B O E T O
 C O N T R A B A S S O O N Q N C X P

Band

Orchestra

Brass

Trumpet
 French Horn
 Trombone
 Baritone
 Tuba

Woodwinds

Piccolo
 Flute
 Oboe
 English Horn
 Bassoon
 Contrabassoon
 Clarinet
 Saxophone

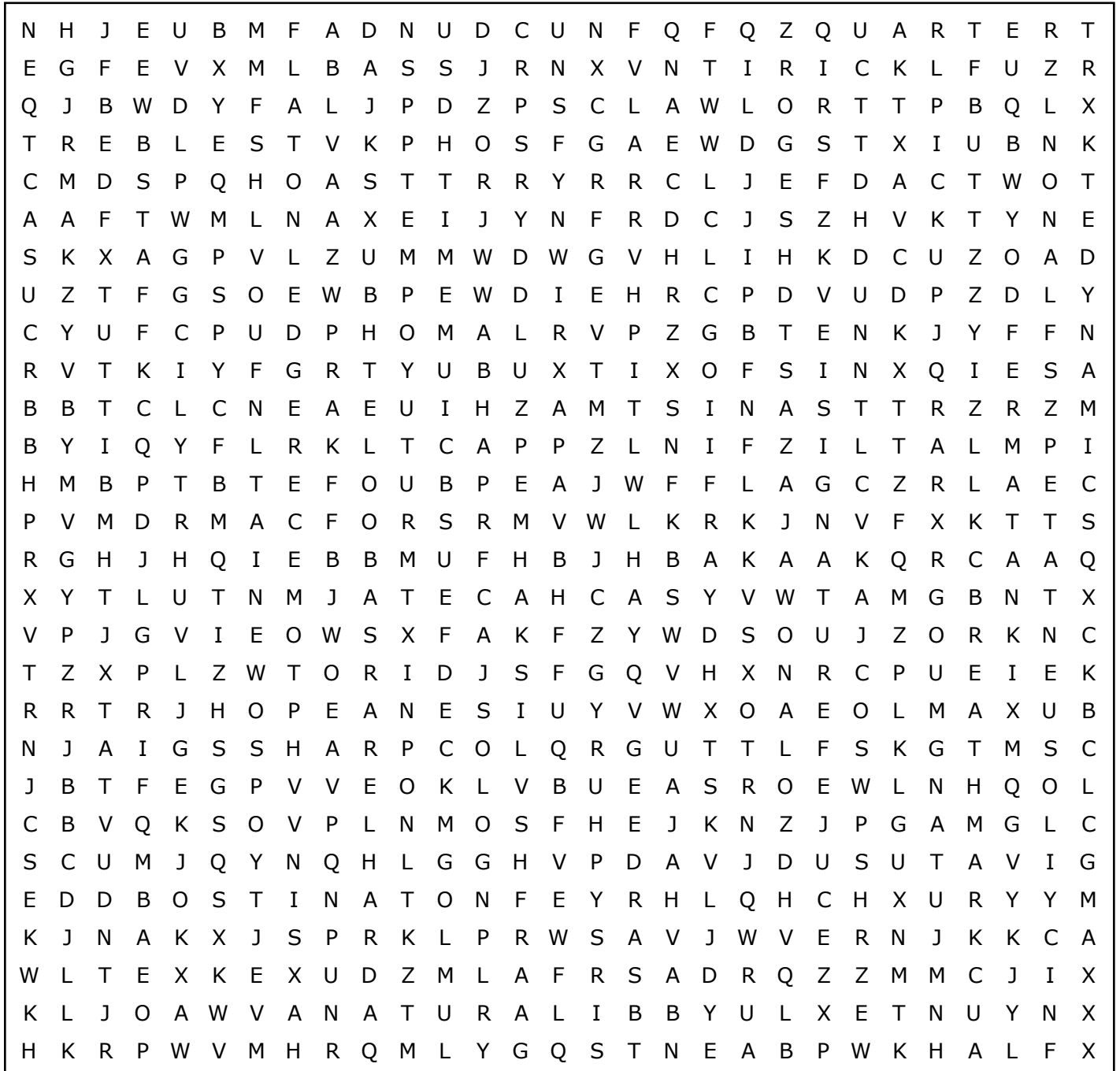
Percussion

Chime
 Cymbal
 Drums
 Gong
 Harp
 Maracas
 Piano
 Timpani
 Bells

Strings

Violin
 Viola
 Cello
 Doublebass

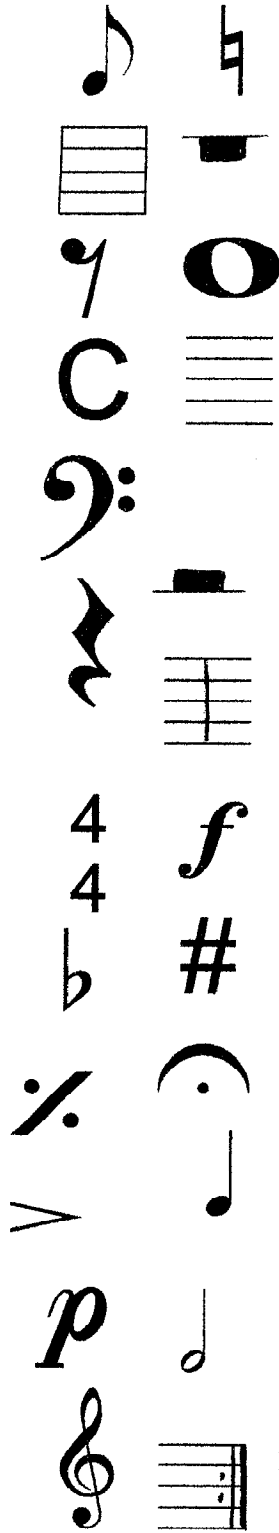
Musical Word Search



- | | | | | | |
|------------|-----------|----------|------------|--------|---------|
| ACCIDENTAL | BARLINE | BASS | BREATHMARK | CLEF | POSTURE |
| EMBOUCHURE | DIVISI | DYNAMICS | FERMATA | WHOLE | FLAT |
| SHARP | KEY | LEDGER | MEASURE | HALF | NATURAL |
| OSTINATO | PICKUP | REPEAT | SLUR | SOLI | SOLO |
| STAFF | TEMPO | TIE | TIME | TREBLE | TUTTI |
| QUARTER | SIGNATURE | | | | |

Name _____ Instrument _____
 School _____ Date _____

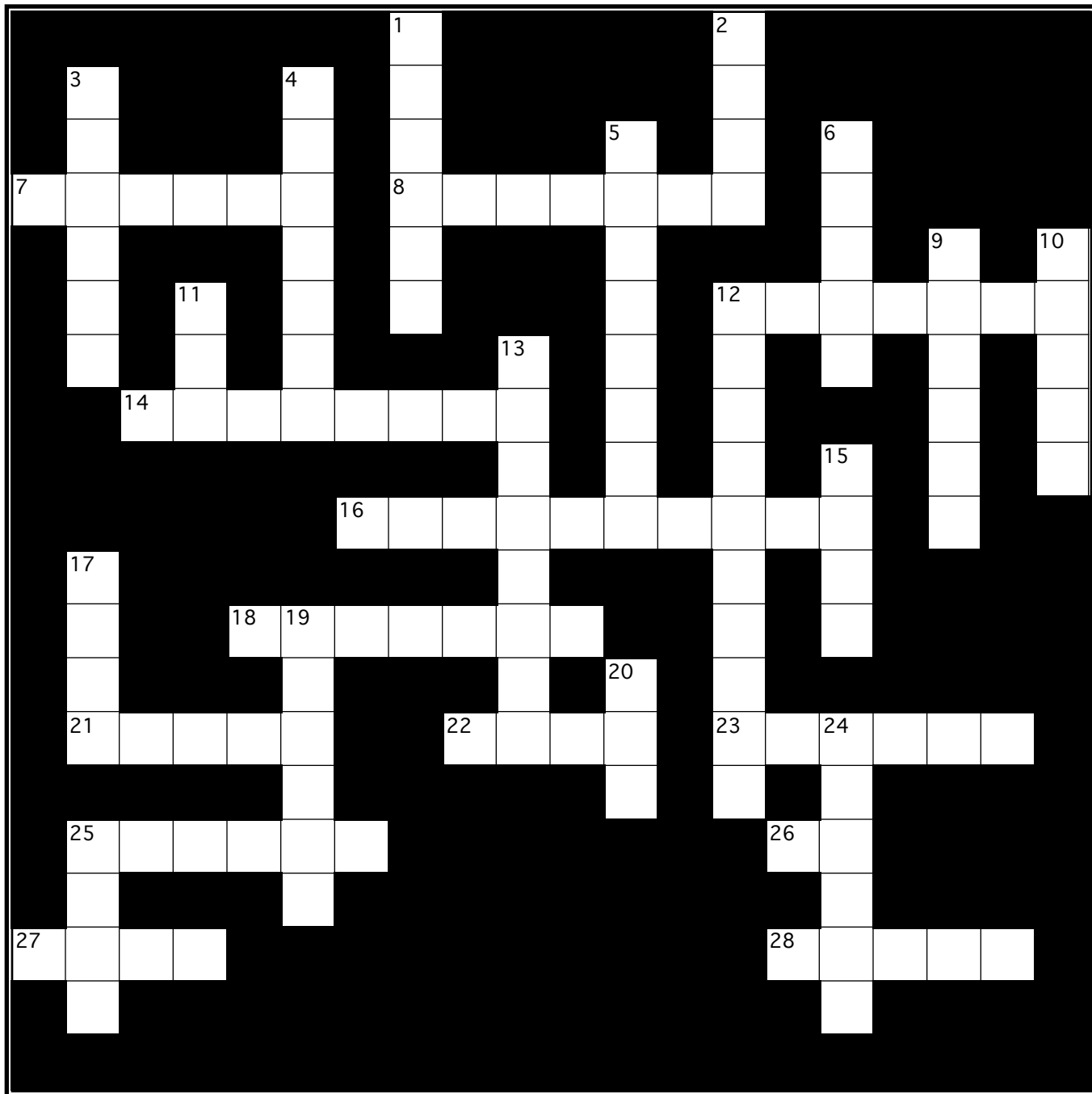
Draw the symbol to match the word in the box.



Staff	Treble Clef	Quarter Note	Measure
Repeat Sign	Half Note	Soft	Natural
Eighth Note	Time Signature	Half Rest	Whole Note
Full Measure Repeat	Loud	Fermata	Eighth Rest
Bass Clef	Flat	Quarter Rest	Accent
Whole Rest	Sharp	Common Time	Bar Line

The Terminator!

(Musical Terms Crossword Puzzle)



Across

- 7 A ____ line is a short, horizontal line drawn underneath or above the staff for notes too low or too high to appear on the staff.
- 8 The distance between two bar lines. It is sometimes called a "bar."
- 12 A vertical line that divides the staff into measures. (2 words)
- 14 Words or signs indicating how loud/soft to play.
- 16 Any sharp, flat or natural sign in front of a note.
- 18 This sign cancels a sharp or flat. It always appears before the note. When saying the name of the note, make sure to say "____" after the letter name.
- 21 The collection of five horizontal lines on which music is written.
- 22 An entire instrumental section plays the melody together.
- 23 "____ signs" define a section of music to be repeated.
- 25 After seeing the first ending and repeating the music, this sign tells you to skip the first ending and go to the _____ ending.
- 26 An Italian abbreviation meaning "The Head." It tells you to go back to the beginning of the music.
- 27 A curved line connecting two or more notes of different pitches. You only tongue the first note.
- 28 Everyone is playing at the same time.

Down

- 1 "____ time" is another way to write 4/4. I looks like a capitial "C" on your music.
- 2 The "____ signature" is the sign that appears right after the key signature in a piece of music. It is made up of two numbers. The top number tells you how many beats are in each measure; and, the bottom number tells you what type of note gets one beat.
- 3 The "____ clef" is the sign written at the beginning of each staff which designates the letter names of the lines and spaces for flute, oboe, clarinet, saxophone, trumpet, french horn, and mallet percussion.

4 A "bird's eye" symbol that tells you to hold a note longer than its normal length. Watch your conductor to know how long the note is held.

5 This sign indicates a rest of more than one measure. The number of measures to rest is given above the symbol. "A ____ measure rest."

6 This sign raises the pitch by one half-step. It always appears before the note. When saying the name of the note, make sure to say "____" after the letter name.

9 One person/group plays the bottom notes and another person/group plays the top notes.

10 The speed of the music is determined by how many beats occur every minute. A fast ____ has more beats per minute than does a slow one.

11 The "____ signature" is the list of sharps or flats appearing right after the clef sign that affect certain notes throughout a piece of music. The sharp/flat symbols sit on the line or space of the note they affect.

12 A sign telling you when to take a breath. (2 words)

13 A repeated musical phrase. It is usually used as an accompaniment.

15 This sign lowers the pitch by one half-step. It always appears before the note. When saying the name of the note, make sure to say "____" after the letter name.

17 The "____ clef" is the sign written at the beginning of each staff which designates the letter names of the lines and spaces for tuba, trombone, baritone, bassoon, bass, and timpani.

19 These Italian words tell you to play until you see the word "fine." They are often used along with the answer to 26 across. (2 words)

20 A curved line connecting two or more notes of the same pitch. You only tongue the first note.

24 A note (or several notes) that comes before the first full measure. These are called ____-____ notes. (2 words)

25 Only one person is playing.

Glossary of Musical Terms - 1

Accidental 

Any sharp, flat, or natural sign in front of a note is called an accidental.

Bar Line 

A bar line is a vertical line that divides the staff into measures.

Bass Clef 

The Bass Clef is a sign written at the beginning of each staff which designates the letter names of the lines and spaces. Tuba, trombone, baritone, bassoon, bass, and timpani use the bass clef.

Breath Mark 

A sign telling you when to take a breath is called a breath mark.

Common Time 

This is another way to write $\frac{4}{4}$

D.C. al Fine

D.C. stands for *Da Capo* which, in Italian, means *the head*; *Fine* means *end*. D.C. al Fine tells you to go back to the beginning and play until you see the word *Fine*.

Divisi (Div.)

One person/group plays the bottom notes and another person/group plays the top notes.

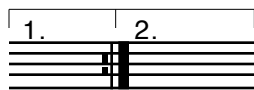
Dynamics *pp...p...mp...mf...f...ff* 

Dynamics are words or signs indicating how loud/soft to play.

Fermata 

A fermata is the “bird’s eye” symbol that tells you to hold a note longer than its normal length. It can appear above or below a note. When following a conductor, watch him/her to know how long the note is held.

First & Second Endings



When you see these, play until the end of the first ending then repeat the music. The second time through, skip over the first ending and jump directly to the second ending.

Flat 

This sign lowers the pitch by one half-step. The flat sign always appears *before* the note. When saying the name of the note, make sure to say “flat” *after* the letter name. (e.g. you say, B-flat)

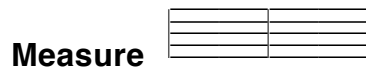
Glossary of Musical Terms - 2



The list of sharps or flats appearing right after the clef sign that affect certain notes throughout a piece of music is called a key signature. The sharp/flat symbols sit on the line or space of the note they affect.



A ledger line is a short, horizontal line drawn underneath or above the staff for notes too low or too high to appear on the staff.



A measure is the distance between two bar lines. It is sometimes called a “bar.”



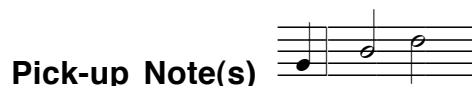
This sign indicates a rest of more than one measure. The number of measures to rest is given above the symbol.



A natural sign cancels a sharp or flat. The natural sign always appears *before* the note. When saying the name of the note, make sure to say “natural” *after* the letter name. (e.g. you say, B-natural or F-natural)



An ostinato is a repeated musical phrase. It is usually used as an accompaniment.



This is a note(s) that comes before the first full measure.



A repeat sign(s) defines a section of music to be repeated.



This sign raises the pitch by one half-step. The sharp sign always appears *before* the note. When saying the name of the note, make sure to say “sharp” *after* the letter name. (e.g. you say, F-sharp)

Glossary of Musical Terms - 3



Slur

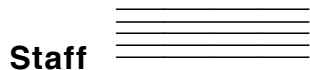
A slur is a curved line connecting two or more notes of *different* pitches. You only tongue the first note of a slur.

Soli

A soli occurs when an entire instrumental section plays the melody together.

Solo

A solo occurs when only one person is playing.



Staff

The staff is the collection of five horizontal lines on which music is written.



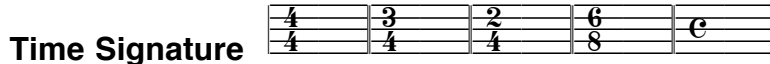
Tempo

The speed (also called tempo) of the music is determined by how many beats occur every minute. A fast tempo has more beats per minute than does a slow tempo.



Tie

A tie is a curved line connecting two or more notes of the *same* pitch. You only tongue the first note of a tie.



Time Signature

A time signature is the sign that appears right after the key signature in a piece of music. It is made up of two numbers. The top number tells you how many beats are in each measure; and, the bottom number tells you what *type* of note gets *one* beat.



Treble Clef

A sign written at the beginning of each staff which designates the letter names of the lines and spaces. Flute, oboe, clarinet, saxophone, trumpet, french horn, and mallet percussion use the treble clef.

Tutti

Tutti means that everyone is playing at the same time.